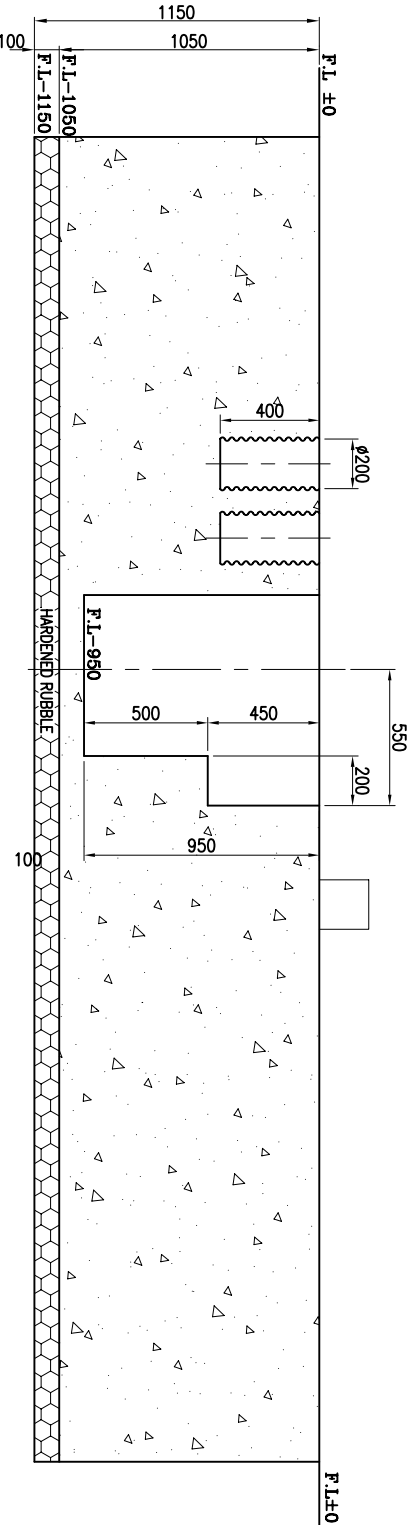
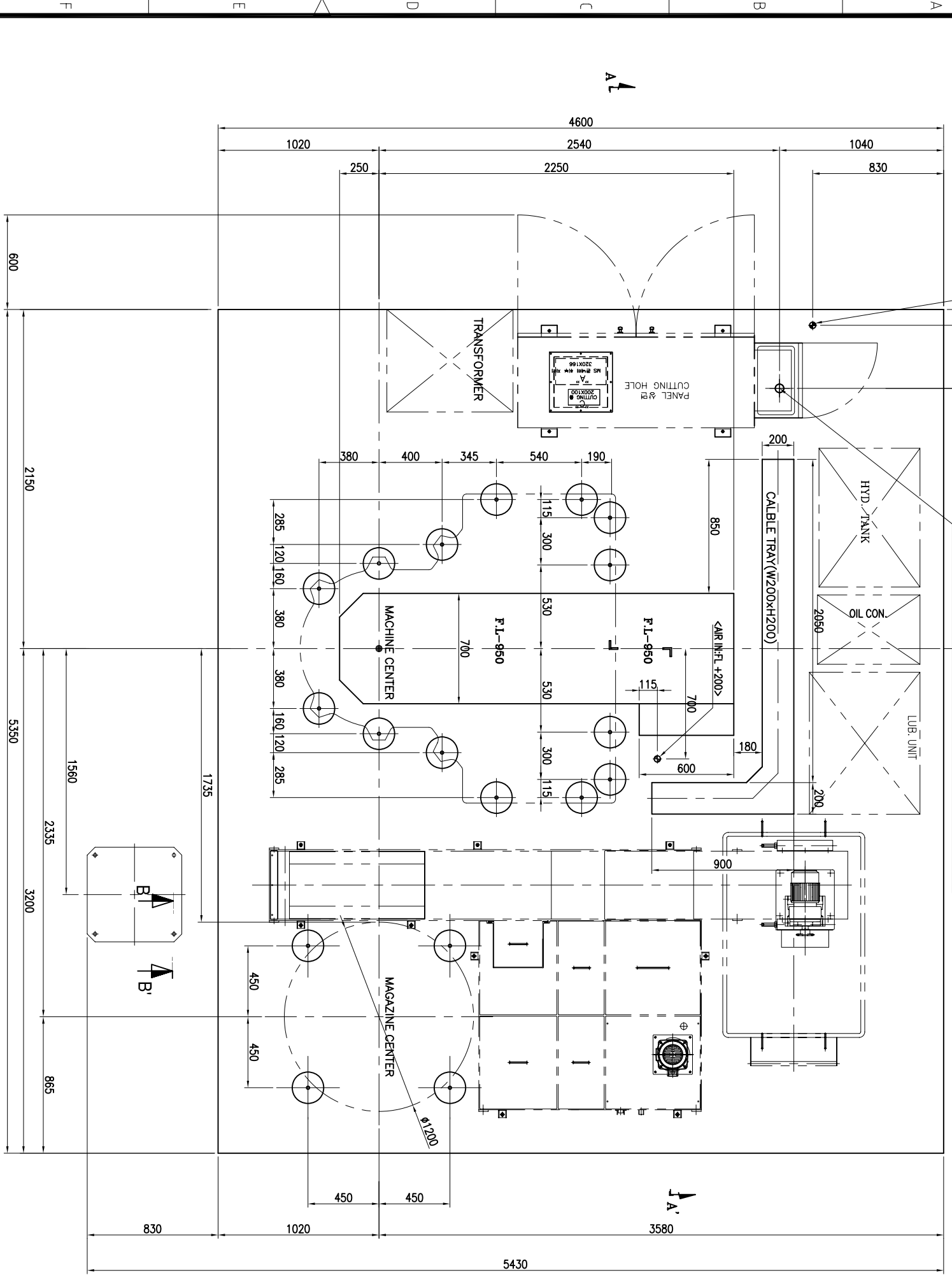
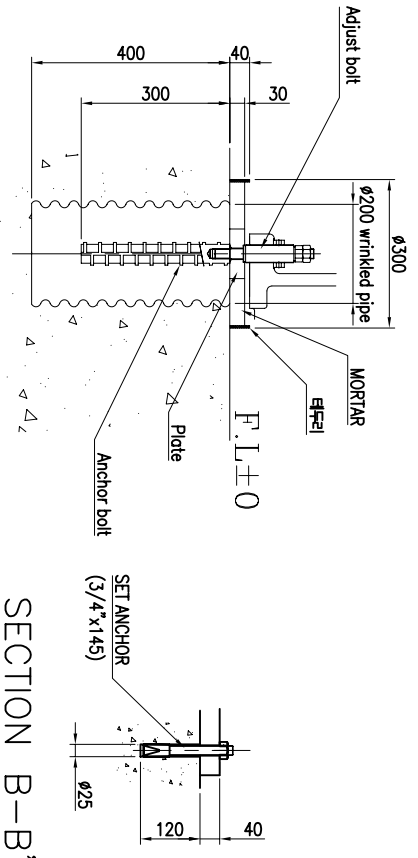


REQUIRED RESISTANCE VALUE OF EARTH : 100 σ BELOW
 Electric power : 3PH 220V 50/60Hz 80KVA(90KVA) (projection length:4000)



LEVELLING BLOCK ASS'Y



※NOTE

1. Mortar for machine installation, use a nonshrink grout mortar. (Recommend motor: MASTER FLOW 870-GK)
Customer has to pour mortar into anchor holes.
2. Be sure to pile into the ground if ground bearing is less than 10ton/m²
3. Customer provide the Utility line, Air line, Electric power and Water line by the machine.
Compressed air ;
Volume: 150liter/min, PT 1/2 pipe line, pressure: over 5bar
Electric power: 3PH 50/60Hz (NT-80KVA,VTC-90KVA)(projection length:4000).
4. Dimension of anchor hole keep with in ± 5 mm.
Each hole and less than ± 10 mm in total deviation.
5. Customer provide the flexible tube and cable tray etc. shown on foundation drawing.
6. For the machine installation 10Ton lifting crane, lifting height 6m.
7. This drawing is not available for foundation works.
Customer provide complete drawing according to foundation condition with consulting.
Example : structure, arrangement and reinforce steel ect.

LOAD ANALYSIS

PART	WEIGHT	NO. OF LEVELING BLOCK	
MACHINE BODY + WORKSPACE	22+6=28 TON	14 EA	2t/EA
A.T.C	1.5 TON	4 EA	0.38t/EA

설계기준	하중치 (±)	지시않는 모서리 : C	계	수	1	한국정밀기계(주) NT-12/16 CNC VERTICAL TURNING CENTER FOUNDATION DRAWING
0.9이상	9이하	0.05	지시않는 라운드 : R	적	1/22	
6초과	30이하	0.1		도		
30초과	120이하	0.15		중		
120초과	315이하	0.2		강		
315초과	1000이하	0.3		표		
1000초과	2000이하	0.5		면		
표 (표준규격) 중공리리 0.2 계 정밀도 20 07.01.03				표		

부호	번경일차	번	경	내	용	담당	확인
△							
△							
△							