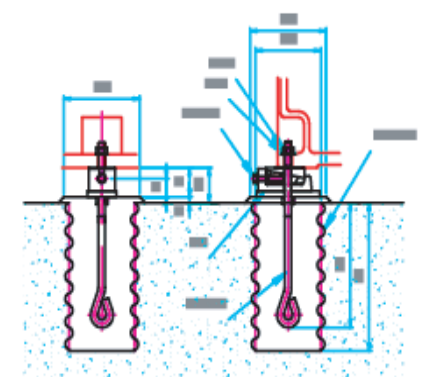
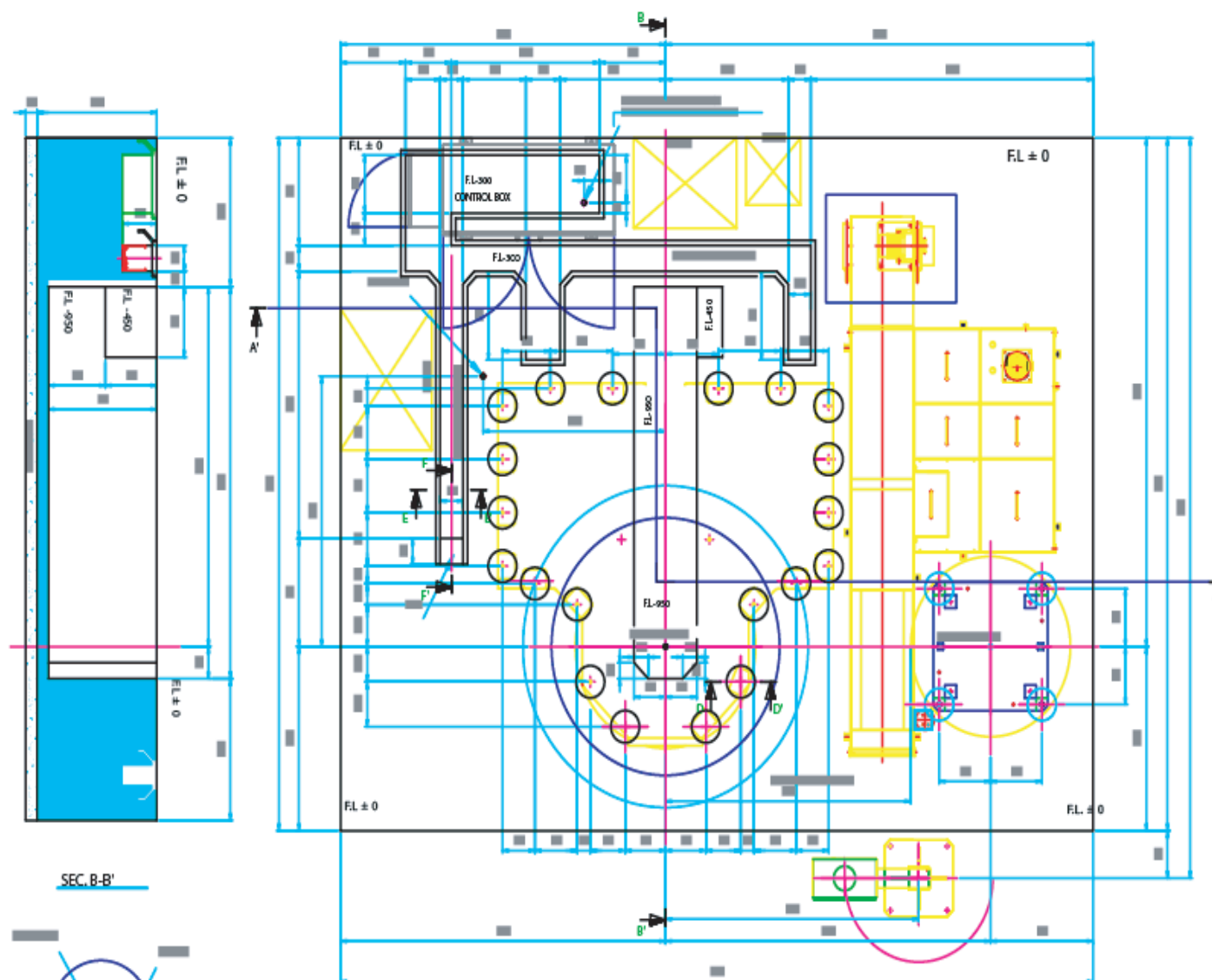
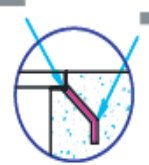


11	12

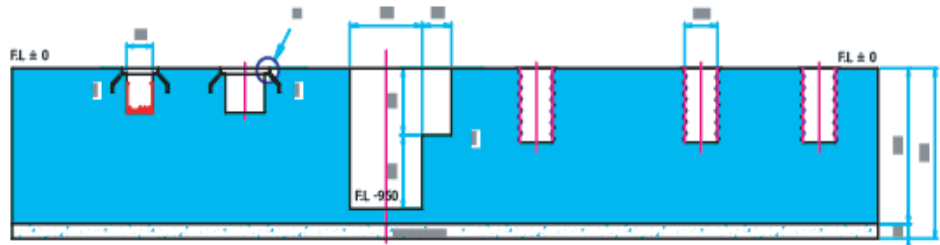


SECTION D-D' LOAD ANALYSIS


SEC. B-B'



DETAIL "C"  
(S=1:1)



**NOTE**

- Mortar for machine installation, use a nonshrink grout mortar. (Recommend mortar: MASTER FLOW 870-GK)  
Customer has to pour mortar into anchor holes.
- Be sure to pile into the ground if ground bearing is less than 14.223lb/in
- Customer provide the PIT COVER around machine and CHECK PLATE ON HOLE after machine set up.
- Customer provide the Utility line, Air line, Electric power and Water line by the machine.  
Compressed air ;  
Volume: 17.6ft<sup>3</sup>/min, 1/2" pipe line, pressure: over 71.115lb/in.  
Electric power: 3PH 60Hz 120kVA 100SQ (projection length 78.74inch).  
Incoming power specification to the machine : 220V, 250A
- Dimension of anchor hole keep with in ±0.197inch.  
Each hole is less than ±0.304inch in total deviation.
- Customer provide the flexible tube and cable tray etc. shown on foundation drawing.
- For the machine installation 15ton lifting crane, lifting height 30ft.
- This drawing is not available for foundation works.  
Customer provide complete drawing according to foundation condition with consulting.  
Example : structure, arrangement and reinforce steel etc.