

1.2. Foundation drawing for installation

Power cable connection

Distance from floor to the control box base(765mm)

Power capacity: 31kVA (Mitsubishi 12R STD)

Cable size: 38mm² Mitsubishi 12R STD

Grounding: Class D (Max. 100Ω)

Cable size equal to the power cable

Main Air Inlet (Height from floor 1000mm)

0.5MPa

Capacity : 600L/min(AMR) or more

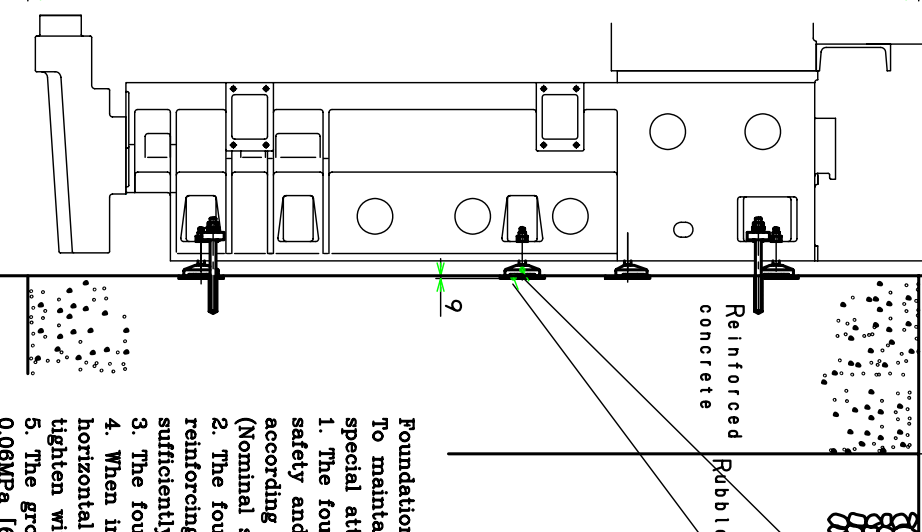
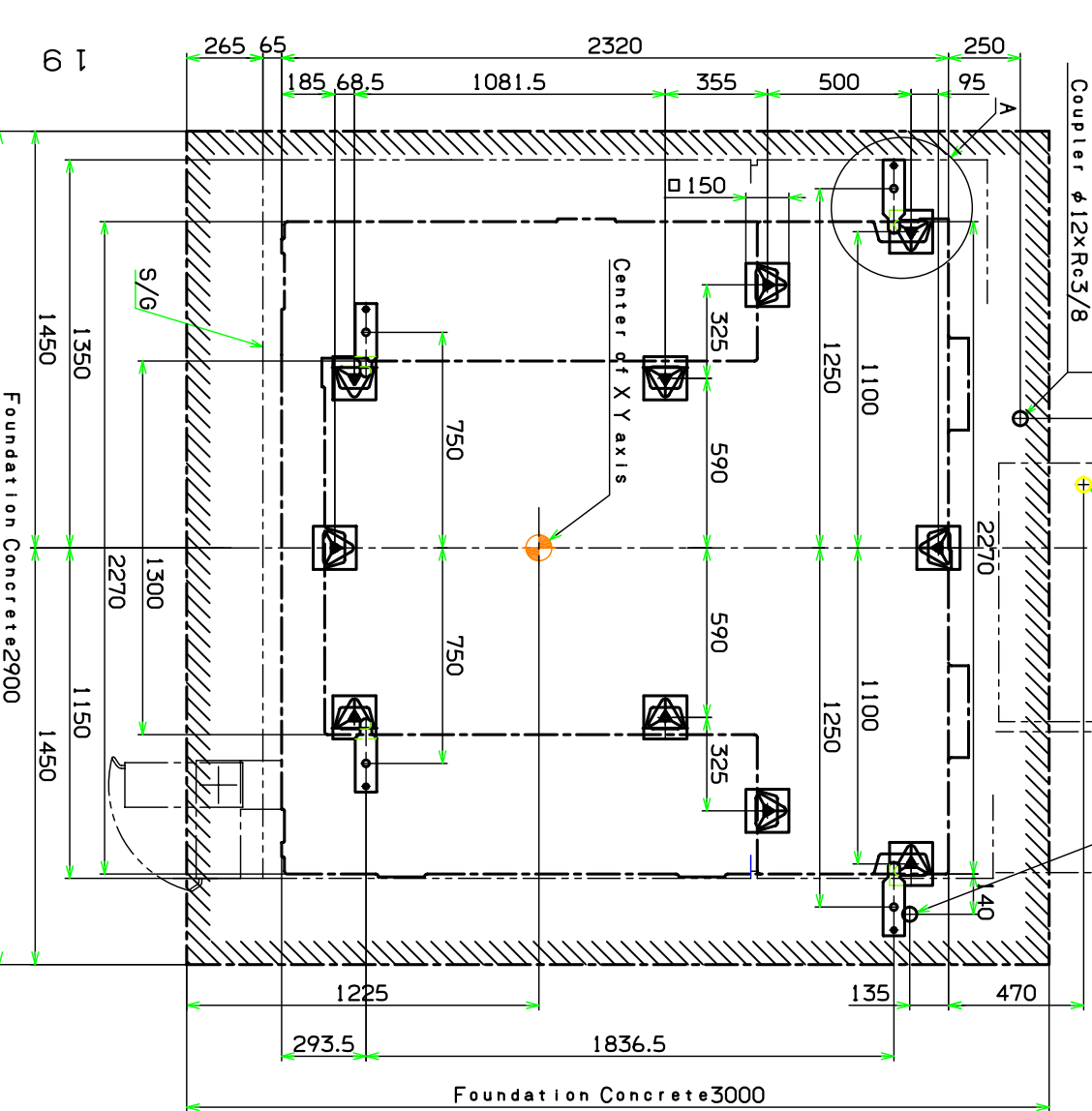
Coupler φ12xRc3/8

Main Air Inlet (Height from floor 1100mm)

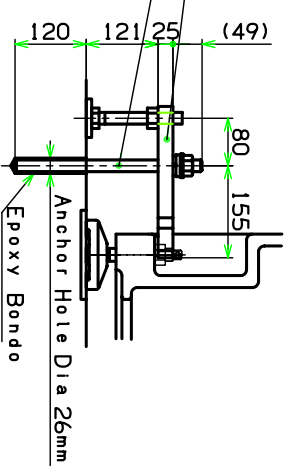
0.5MPa

Capacity 12R: 160L/min(AMR) or More

Hose Nipple: φ12xRc3/8



Clamber	4M0154218B	(qty 4)
Bolts	SS0182014	(qty 4)
Nut	SS2042000	(qty 4)
Plate	4M0112192A	(qty 4)
Anchor Bolt	4M0526158A	(qty 4)
Spring Washer	SS2552000	(qty 4)
Washer	YS9195020	(qty 4)
Nut	SS2042000	(qty 4)



Block Level	4M0161032A	(10pcs)
Jack Bolt	4M0161079A	(10pcs)
Nut	4M0350008J	(10pcs)
Floor Plate 10 sheets (to be furnished by customer)		
	150X150X9	

Foundation and Installation:

To maintain machine precision and prevent vibration, pay special attention to the following:

1. The foundation should be rugged enough to maintain safety and horizontality for the machine weight according to the ground for installation place. (Nominal strength: 23MPa [230kgf/cm²] min.)
2. The foundation concrete should be reinforced with the sufficiently withstand the machine weight.
3. The foundation concrete should be cured for 4 weeks.
4. When installing the machine, set a leveling block for horizontal centering and to prevent oscillation, tighten with foundation bolt(option) for adjustment.
5. The ground soil bearing power required should be 0.06MPa [6t/m²] min.
6. When the nature of the solid and soil bearing capacity are unfavorable, determine the pile size and number of piles according to them for installation.

Machine Weight 10500kg
Max Work Load 1200kg

VP600

標準 / GR / 5AX 仕様機