

2.3 Foundation Drawing for installation and Anchor

V P 6 0 0

Controller	Spindle Rotation speed	Spindle motor	Power Capacity	Cable size
FANUC	12000 rpm	7.5KW / 5.5KW	28 KVA	30mm ²
	20000 rpm	22KW / 18.5KW	50 KVA	50mm ²
		22KW / 18.5KW	50 KVA	50mm ²
MITSUBISHI	12000 rpm	7.5KW / 5.5KW	31 KVA	38mm ²
	20000 rpm	22KW / 18.5KW	52 KVA	50mm ²
		22KW / 18.5KW	50 KVA	50mm ²

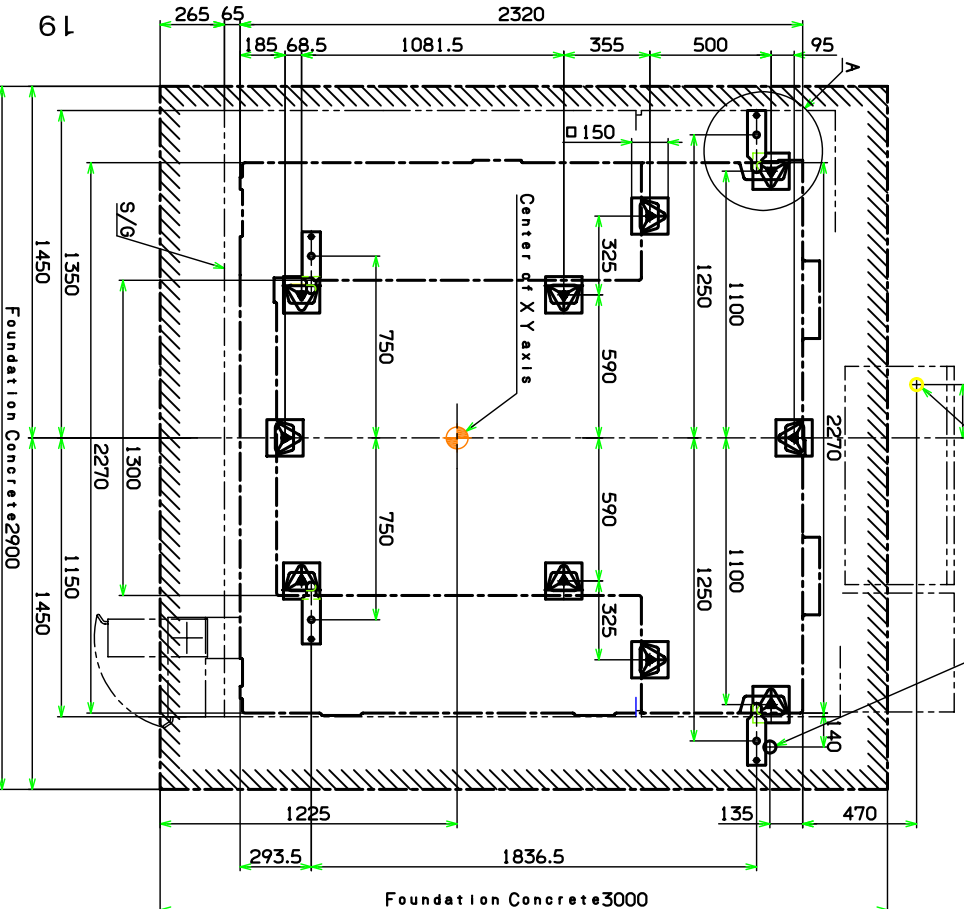
Power cable incoming port: Height to control base(765mm)

Power capacity: Refer to the table right side

Cable size: refer to the table right side

Grounding: Class D (Max. 100 Ω)

Cable size equal to the power cable



Main Air Inlet (Height: from floor, 1100mm)

Air pressure: 0.5MPa

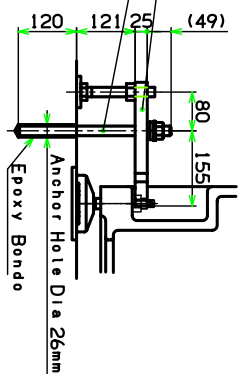
Capacity 12R: 60L/min(AIR) or More

20R: 40L/min(AIR) or More

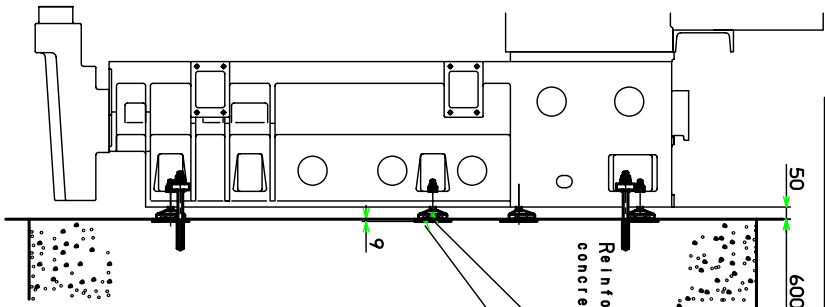
Hose Nipple: ϕ 12xRc3/8

* See note below.

Clamber	4M01542188	(qty 4)
Bolts	SS0182014	(qty 4)
Nut	SS2042000	(qty 4)
Plate	4M0112192A	(qty 4)
Anchor Bolt	4M0526158A	(qty 4)
Spring Washer	SS2552000	(qty 4)
Washer	YS9195020	(qty 4)
Nut	SS2042000	(qty 4)



Block Level 4M0161032A (10pcs)
 Jack Bolt 4M0161079A (10pcs)
 Nut 4M0330008J (10pcs)
 Floor plate 10 sheets
 (to be furnished by customer)
 150X150X9



Foundation and Installation:

- To maintain machine precision and prevent vibration, pay special attention to the following:
1. The foundation should be rugged enough to maintain safety and horizontality for the machine weight according to the ground for installation place. (Nominal strength: 23MPa [230kgf/cm²]).
 2. The foundation concrete should be reinforced with the reinforcing bar arranged as appropriate so that it may sufficiently withstand the machine weight.
 3. The foundation concrete should be cured for 4 weeks.
 4. When installing the machine, set a leveling block for horizontal centering and to prevent oscillation.
 5. The ground soil bearing power required should be 0.06MPa [6t/m²].
 6. When the nature of the solid and soil bearing capacity are unfavorable, determine the pile size and number of piles according to them for installation.

Machine Weight: 10500kg
 Max Work Load: 1200kg
 * : Connect a hose (arranged by customer) being suitable for the above hose nipple.