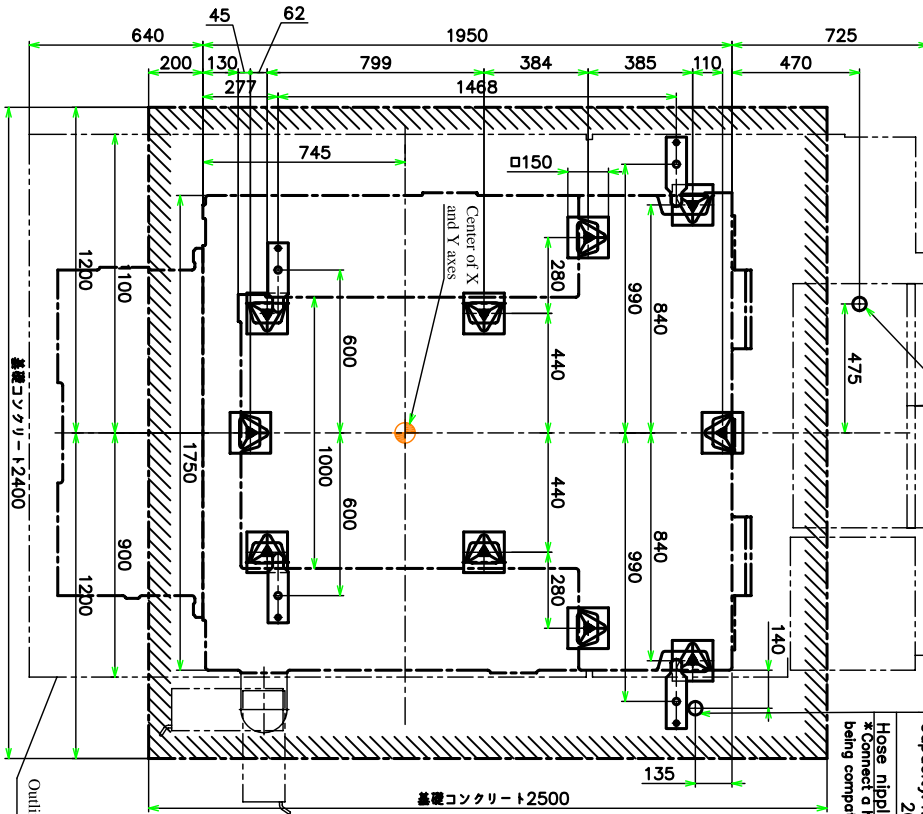


Foundation Drawing for installation

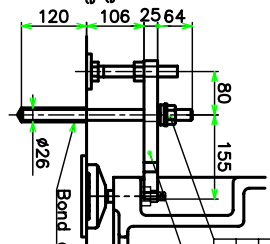
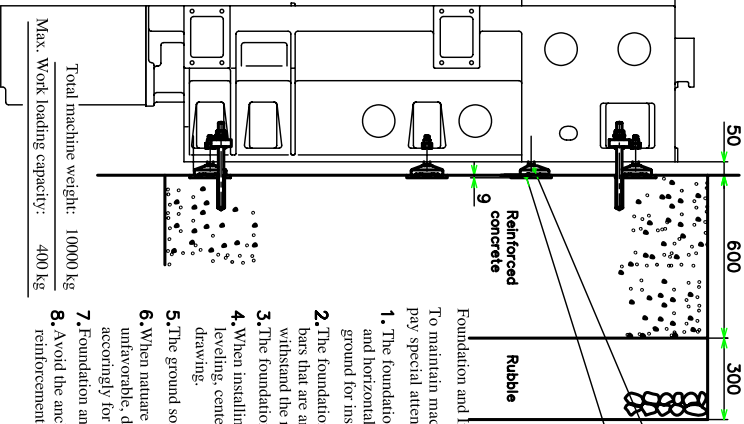
Power cable connection  
 Distance from floor to the control box base: 965  
 Power capacity: Refer to the table right  
 Cable size: Refer to the table right  
 Grounding: Class D(Max.1000)  
 Cable size equal to the power cable

Controller	Spindle rotating speed	Spindle motor(W)	Power capacity	Cable size
FANUC	12000 rpm	22/18.5	50 KVA	50 mm <sup>2</sup>
	20000 rpm	22/18.5	50 KVA	50 mm <sup>2</sup>
Mitsubishi	12000 rpm	22/18.5	50 KVA	50 mm <sup>2</sup>
	20000 rpm	22/18.5	50 KVA	50 mm <sup>2</sup>

Air connection: Distance from floor to the hose nipple: 1220mm  
 Air Pressure: 0.5MPa  
 Capacity: 12R : 400L/min(ANR) or more  
 20R : 600L/min(ANR) or more  
 Hose nipple: φ12 x Rc3/8  
 \*Connect a hose (arranged by customer) being compatible with the above nipple



Outline of the splash guard



Anchor bolt 4M05261588A(4pcs)  
 Spring washer SS2552000 (4pcs)  
 Lock washer YS9195020 (4pcs)  
 Nut SS2042000 (4pcs)  
 Brace 4M01542188I(4pcs)  
 Bolt SS0182014 (4pcs)  
 Nut SZ042000 (4pcs)  
 Floor plate 4M0112192A(4pcs)

Block level 4M0161032A (10pcs)  
 Jack bolt 4M0161079A (10pcs)  
 Nut 4M0330008J (10pcs)  
 Floor plate 10 pcs (Arranged by customer)  
 150X150X9

Foundation and Installation:

To maintain machine precision and prevent vibration, pay special attention to the following:

1. The foundation should be rugged enough to maintain safety and horizontality for the machine weight according to the ground for installation place(Normal strength:Mm23Mpa)
2. The foundation concrete should be reinforced with reinforcing bars that are arranged as appropriate so that it may sufficiently withstand the machine weight.
3. The foundation concrete should be cured for 4 weeks
4. When installing the machine, set and adjust leveling blocks for leveling, centering and to prevent oscillation as shown in the drawing.
5. The ground soil bearing power should be at least 0.06MPa.
6. When nature of the soil and soil bearing capacity are unfavorable, determine the pile size and the number of piles according to installation.
7. Foundation anchor bolts are optionally provided.
8. Avoid the anchor hole position to embed the reinforcement

Total machine weight: 10000 kg  
 Max. Work loading capacity: 400 kg

VP500	ZAPC
-------	------