

13. FOUNDATION DRAWING

GEAR HEAD(10R).MS HEAD SPEC.

AIR SUPPLY(HEIGHT TO HOSE NIPPLE: 1m)

NOTE: POWER CABLE AVOIDING FROM COOLANT TANK

PRESSURE: 0.4~0.6MPa

CAPACITY: 400L/min(ANR) OR LARGER

HOSE NIPPLE: 15DIAXRc1/2

GEAR HEAD(6/8R) SPEC.

AIR SUPPLY(HEIGHT TO HOSE NIPPLE: 1m)

PRESSURE: 0.4~0.6MPa

CAPACITY: 400L/min(ANR) OR LARGER

HOSE NIPPLE: 12DIAXRc3/8

CUSTOMER SHOULD PREPARE AND CONNECT A HOSE THAT IS COMPATIBLE WITH THE ABOVE HOSE NIPPLE.

	ITEM NUMBER	NAME	QTY	UNIT	REMARKS
No.50 GEAR HEAD 6/8R	MITSUBISHI	39	30	個	
	FANUC	45	30	個	
No.50 GEAR HEAD 6/8R FOMEN-UP	MITSUBISHI	37	30	個	
	FANUC	45	30	個	
No.50 GEAR HEAD 10R	MITSUBISHI	37	30	個	
	FANUC	66	30	個	
No.50 MS HEAD 13R	MITSUBISHI	61	30	個	
	FANUC	61	30	個	

POWER CABLE INCOMING PORT(HEIGHT TO CONTROL BOX BASE 1m)

NOTE: POWER CABLE AVOIDING FROM COOLANT TANK

POWER CAPACITY(REFER TO ABOVE TABLE)

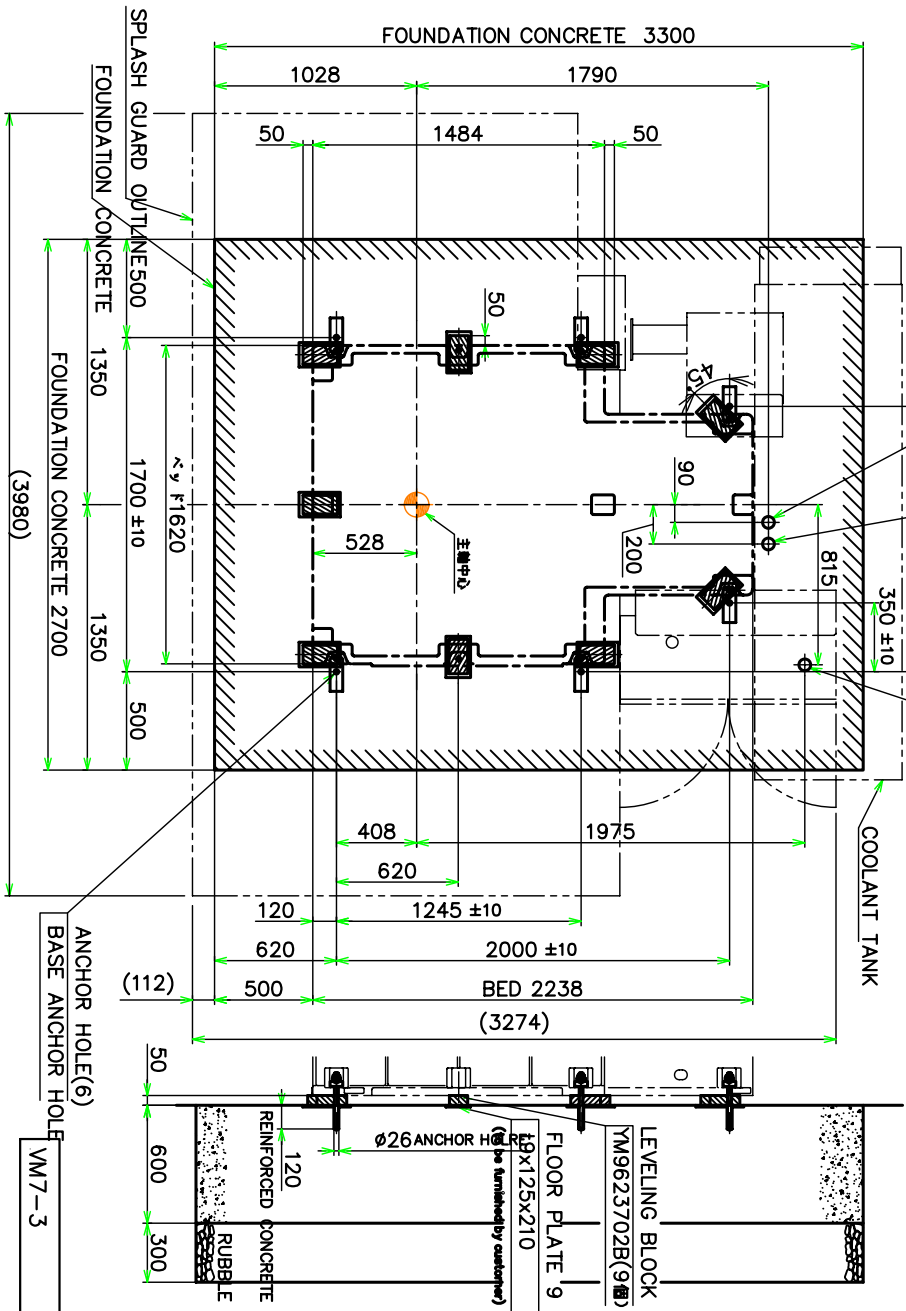
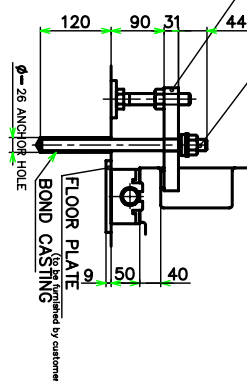
POWER CABLE SIZE(REFER TO ABOVE TABLE, OR MORE)

GROUNDING: CLASS D(100Ω MAX)

CABLE SIZE EQUAL TO THE POWER CABLE

OPTION

- ANCHOR BOLT 4M01152544(6PCS)
- SPRING WASHER SS2552000 (6PCS)
- SPHERICAL WASHER YS9195020 (6PCS)
- NUT SS2042000 (6PCS)
- BRACE 4M0112190A(6PCS)
- BOLT SS0182012 (6PCS)
- NUT SS2042000 (6PCS)
- FLOOR PLATE 4M0112192A(6PCS)



Foundation and installation:
To maintain machine precision and prevent vibration, pay special attention to the following:

- The foundation should be rugged enough to maintain safety and horizontally for the machine weight according to the ground for installation place.
 - (Nominal strength: 25MPa)
 - The foundation concrete should be reinforced with the reinforcing bar arranged as appropriate so that it may sufficiently withstand the machine weight.
 - The foundation concrete should be cured for 4 weeks.
 - When installing the machine, set leveling blocks for leveling, centering and to prevent oscillation, and adjust and secure with foundation bolts.
 - Periodically check that they stay in proper position and condition.
 - The ground soil bearing power required should be 0.06 MPa minimum.
 - When the nature of the soil and soil bearing capacity are unfavorable, determine the pile size and number of piles accordingly for installation.
 - Drill each anchor hole in position within ±10mm from the reference anchor hole.
 - Avoid the anchor hole position to embed the reinforcement.
 - For the bond anchor procedure, refer to "Anchor Bolt Embedding Work Procedure" in Foundation & Installation Manual.
- NOTE: The following bond is to be prepared by customer at the time of anchor hole processing:
Bond: E200(Konishi Co., Ltd.)
Required amount: 1.0 kg (Standard spec.)

TOTAL MACHINE WEIGHT: 10500kg
MAX. WORKPIECE WEIGHT LOADABLE ON TABLE: 1500kg