

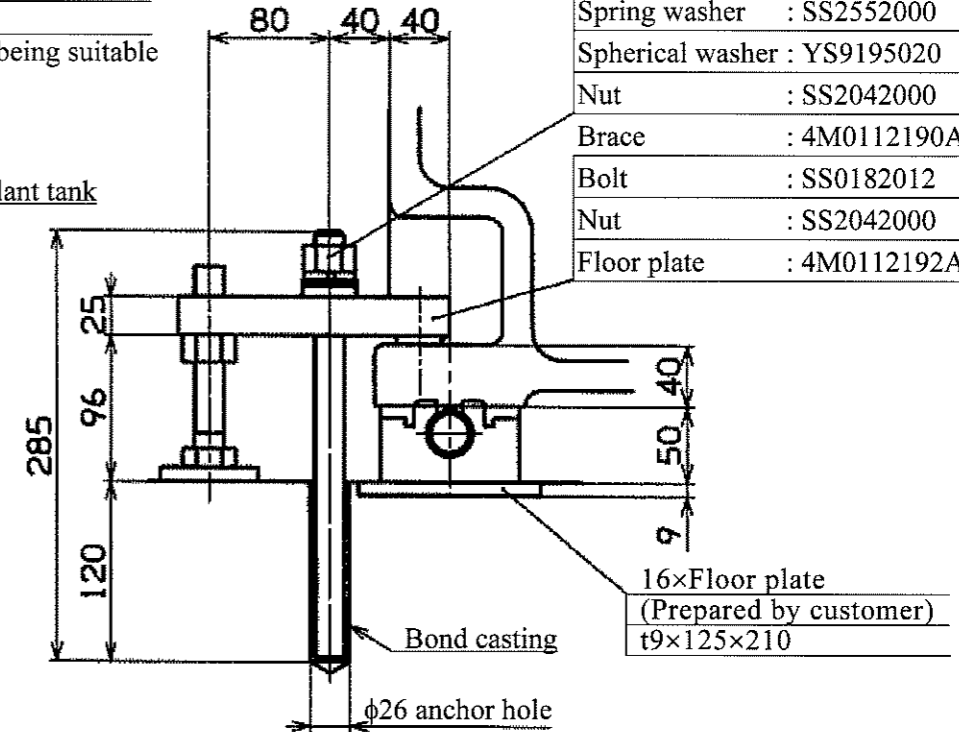
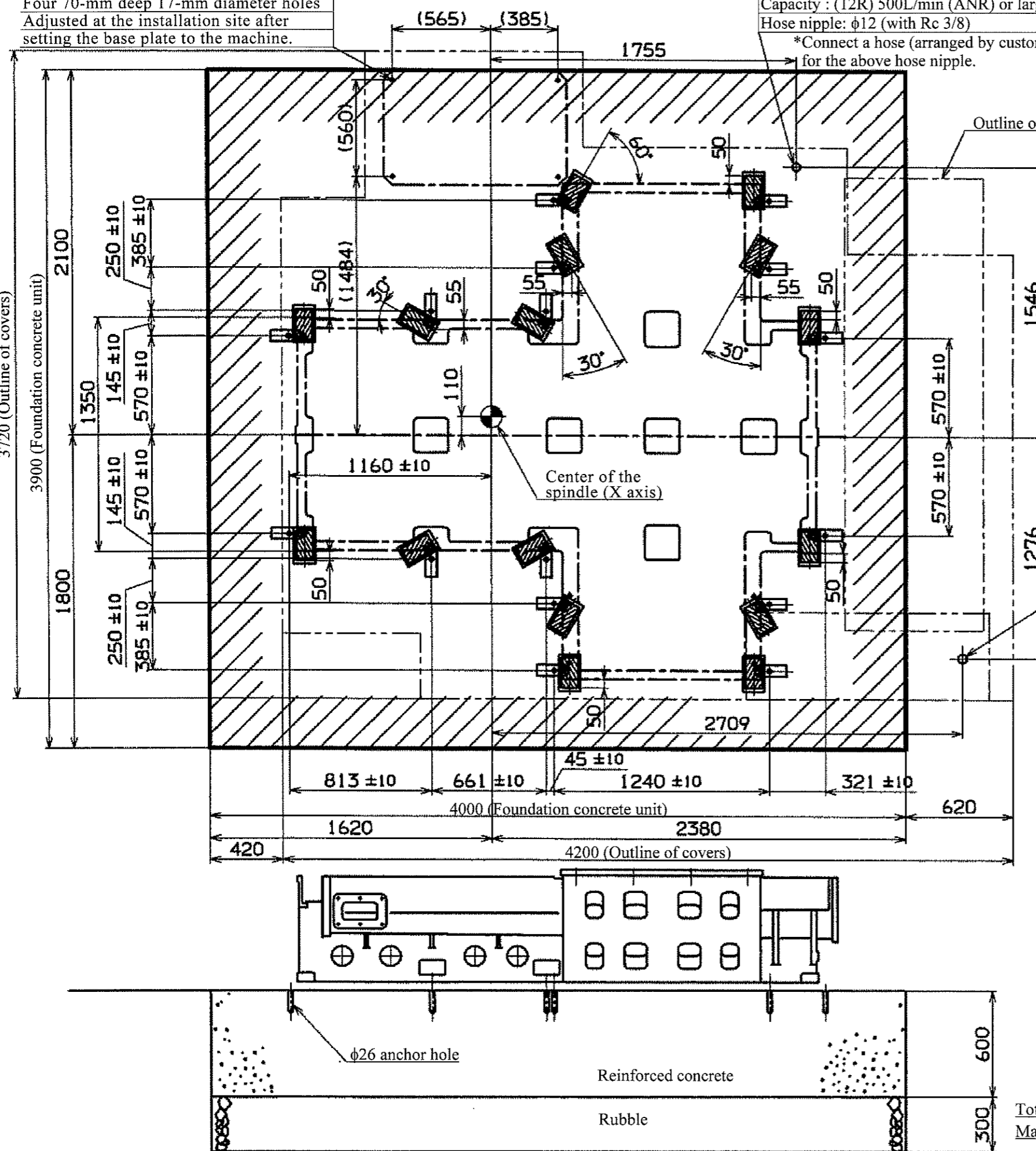
## 2.5 Foundation Drawing for Installation

Magazine anchoring bolt hole  
 Four 70-mm deep 17-mm diameter holes  
 Adjusted at the installation site after  
 setting the base plate to the machine.

Air source connection (From floor to the hose nipple: 725)  
 Air pressure: 0.4 to 0.6MPa  
 Capacity : (12R) 500L/min (ANR) or larger  
 Hose nipple:  $\phi 12$  (with Rc 3/8)  
 \*Connect a hose (arranged by customer) being suitable  
 for the above hose nipple.

Anchor bolt : 4M0115254A (16 pieces)  
 Spring washer : SS2552000 (16 pieces)  
 Spherical washer : YS9195020 (16 pieces)  
 Nut : SS2042000 (16 pieces)  
 Brace : 4M0112190A (16 pieces)  
 Bolt : SS0182012 (16 pieces)  
 Nut : SS2042000 (16 pieces)  
 Floor plate : 4M0112192A (16 pieces)

1 : 25  
 MCO187FD001A  
 官島 (株)  
 061207  
 MT00511  
 3720 (Outline of covers)  
 1800  
 2100  
 3900 (Foundation concrete unit)



Power cable connection (From floor to the control box base: 1000)  
 Power capacity : Refer to the table below  
 Cable size: Refer to the table below  
 (equivalent to or larger than the specified size)  
 Grounding : Class D (Max. 100Ω)  
 Cable size should be equal to the power cable

Controller	Spindle rotating speed	Spindle motor	Power capacity	Cable size
FANUC	12000 rpm	30 kW / 25 kW	70 kVA	38 mm <sup>2</sup> ×2

### Foundation and Installation:

- To maintain machine precision and prevent vibration, pay special attention to the following.
1. The foundation should be rugged enough to maintain safety and horizontality for the machine weight according to the ground for installation place. (Nominal strength: Min. 23 MPa)
  2. The foundation concrete should be reinforced with reinforcing bars arranged as appropriate so that it may sufficiently withstand the machine weight.
  3. The foundation concrete should be cured for 4 weeks.
  4. When installing the machine, set leveling blocks as shown in the drawing for leveling, centering and to prevent oscillation and adjust them. Periodically check that they stay in proper position and condition.
  5. The ground soil bearing power should be Min. 0.06 MPa.
  6. When nature of the soil and soil bearing capacity are unfavorable, determine the pile size and number of piles accordingly for installation.
  7. Drill each anchor hole in position within  $\pm 10$  mm from the reference anchor hole.
  8. Avoid the anchor hole position to embed the reinforcement.
  9. For the bond anchoring procedure, refer to "2.4 Anchor Bolt Embedding Work Procedure" in the Foundation and Installation Instruction Manual.

NOTE: The following bond should be prepared by customer at the time of anchor hole processing work.  
 Bond E200 (Konishi Co., Ltd.)  
 Amount required: 2.0 kg (Standard specification)

Total Machine Weight: 24000 kg  
 Max. Workpiece Loading Capacity: 600 kg