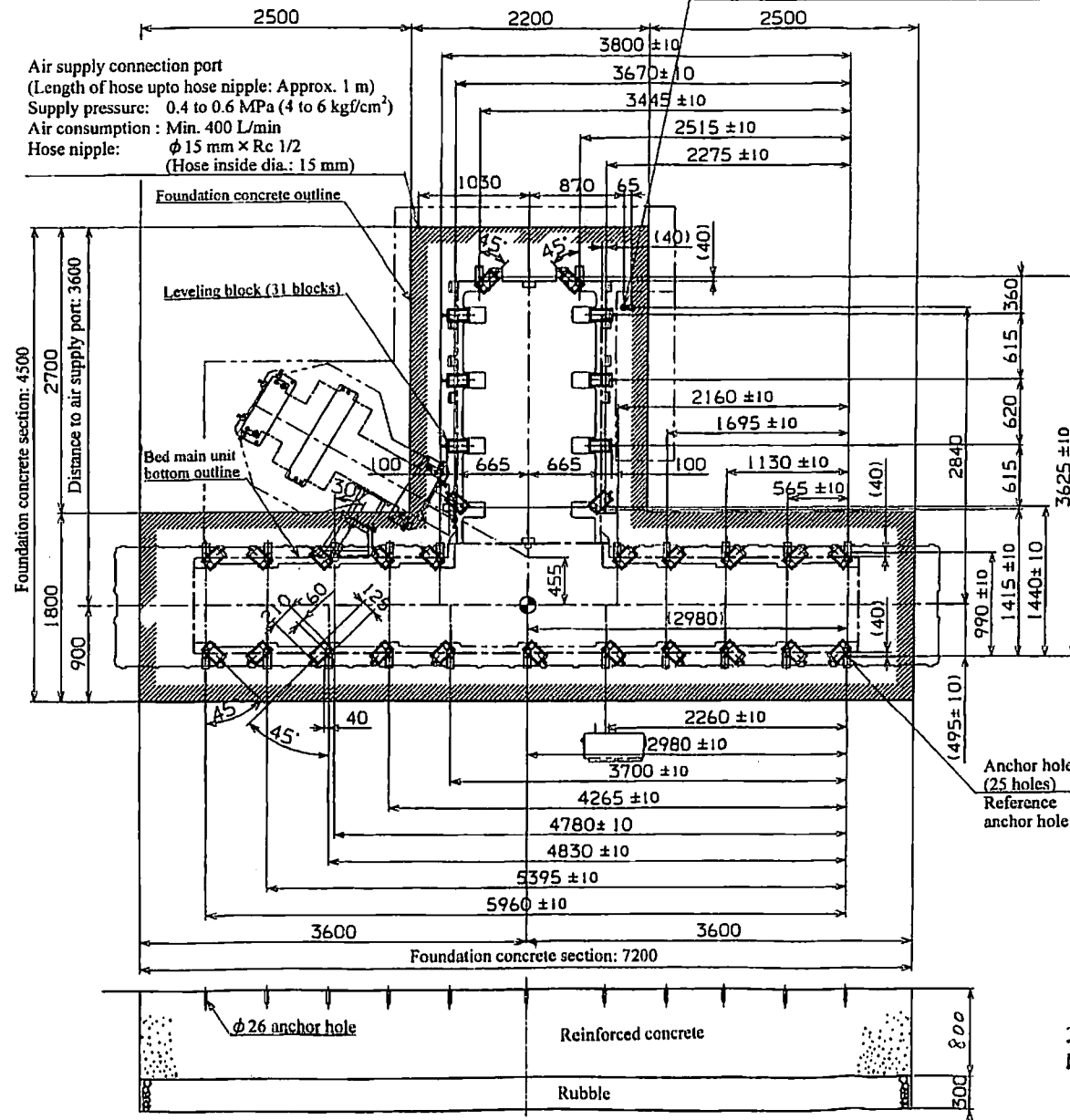


2.6 Foundation Drawing for Installation Machine Main Unit

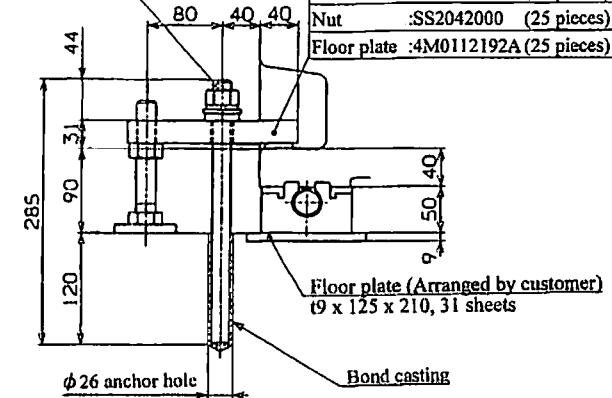
Power cable incoming port (Height to control box base: 350 mm)
 Power capacity: (Standard: High-power motor) 37/30 kW, 89 kVA
 Cable size: Min. 50 mm² x 2 (2 x 50-mm dia. holes)
 Grounding: Class D (100 Ω max.)
 Cable size equal to the power cable

Anchor bolt : 4M0115254A (25 pieces)
 Spring washer : SS2552000 (25 pieces)
 Spherical washer : YS9195020 (25 pieces)
 Nut : SS2042000 (25 pieces)



Air supply connection port
 (Length of hose upto hose nipple: Approx. 1 m)
 Supply pressure: 0.4 to 0.6 MPa (4 to 6 kg/cm²)
 Air consumption : Min. 400 L/min
 Hose nipple: ϕ 15 mm x Rc 1/2
 (Hose inside dia.: 15 mm)

Brace : 4M0112190A (25 pieces)
 Bolt : SS0182012 (25 pieces)
 Nut : SS2042000 (25 pieces)
 Floor plate : 4M0112192A (25 pieces)



Foundation and Installation :

To maintain machine precision and prevent vibration, pay special attention to the following.

1. The foundation should be rugged enough to maintain safety and horizontality for the machine weight according to the ground for installation place. (Nominal strength : 23 MPa Min.)
2. The foundation concrete should be reinforced with the reinforcing bar arranged as appropriate so that it may sufficiently withstand the machine weight.
3. The foundation concrete should be cured for 4 weeks.
4. When installing the machine, set leveling blocks for leveling, centering and to prevent oscillation as shown in the drawing, and adjust and secure with foundation bolts. Periodically check that they stay in proper position and condition.
5. The ground soil bearing power required should be 0.1 MPa Min.
6. When the nature of the soil and soil bearing capacity are unfavorable, determine the pile size and number of piles accordingly for installation.
7. Drill each anchor hole in position within ± 10 mm from the reference anchor hole.
8. Avoid the anchor hole position to embed the reinforcement.
9. For the bond anchor procedure, refer to the separate "2.4 Anchor Bolt Embedding Work Procedure".

NOTE: The following bond should be prepared by customer at the time of anchor hole processing.
 Bond E200 (Konishi Co., Ltd.)
 Required amount: 2.0 kg (Standard spec.)

Total machine weight : 25000 kg
 Max. loadable weight of workpiece : 3000 kg