

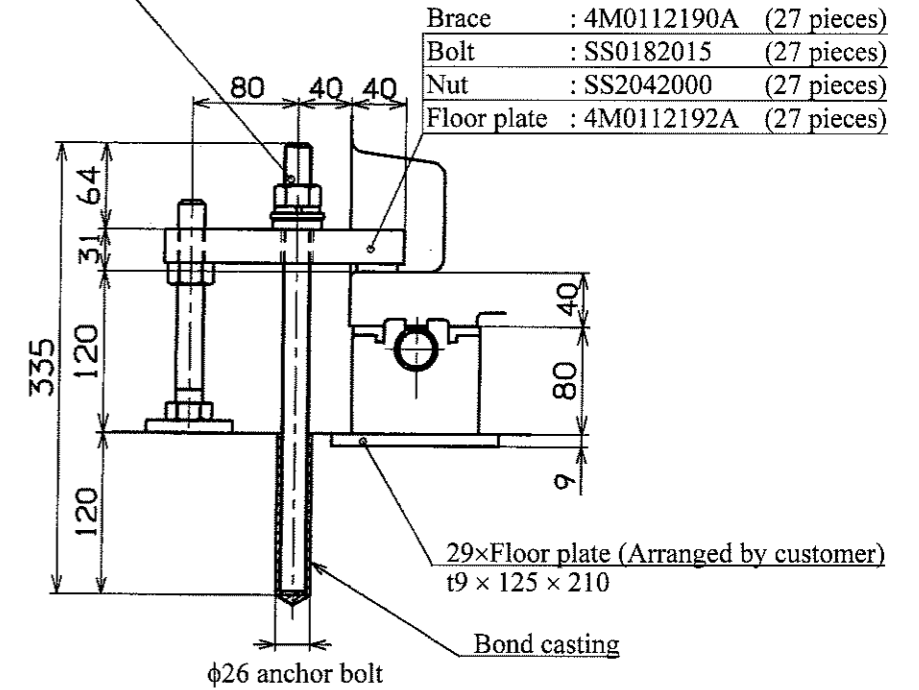
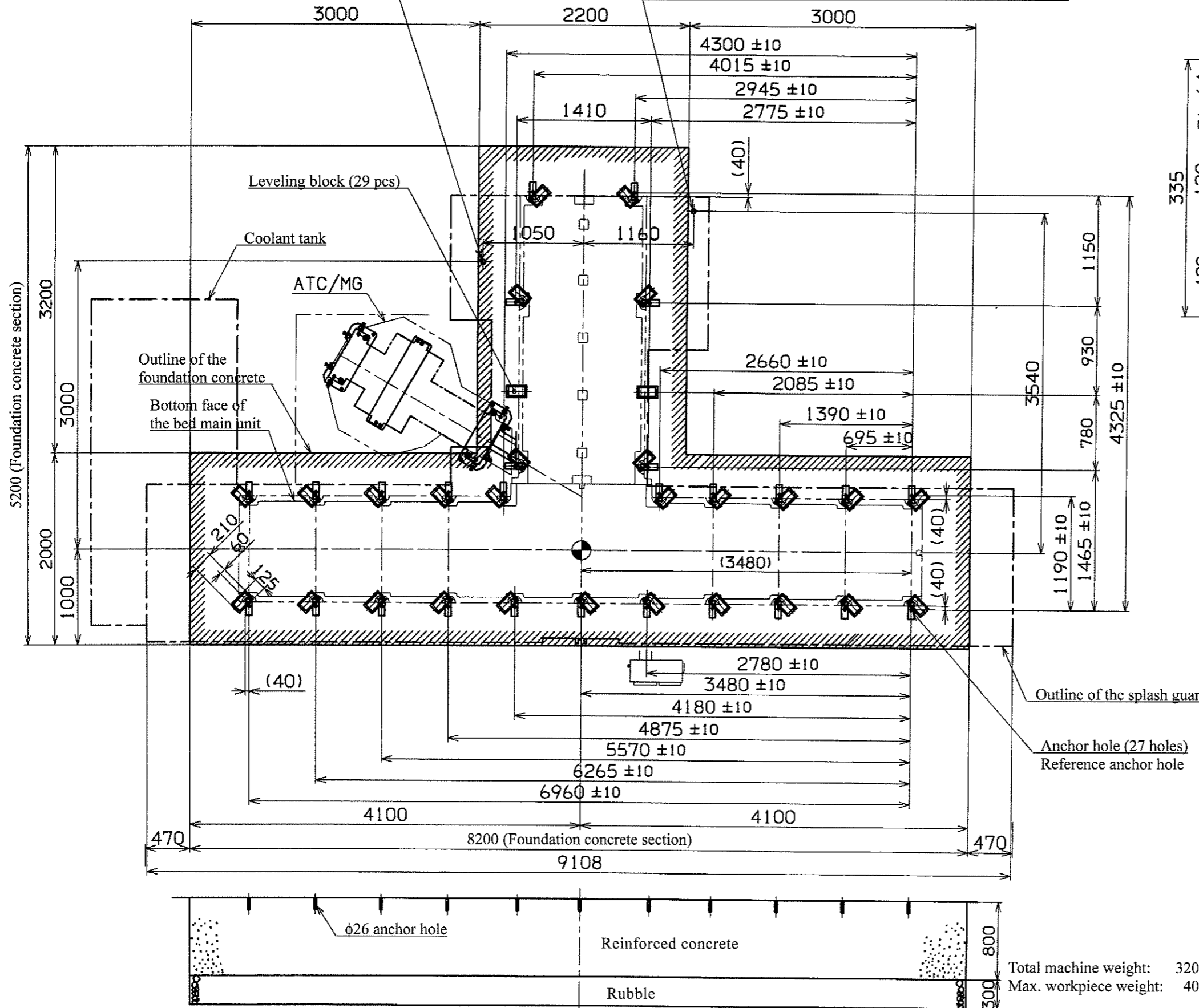
2.6 Foundation Drawing for Installation (1/2)

Air source connection	
(Distance from floor to hose nipple: Approx. 1m)	
Air pressure:	0.4 to 0.6MPa
Capacity :	Min. 400NL/min
Hose nipple:	φ15 with Rc1/2 (Hose inside diameter: 15)

Power cable connection	
Distance from floor to the control box base: 430mm	
Power capacity:	MS head: 45/37kW; 107kVA (FANUC)
Cable size:	38mm ² ×2 pcs or larger (400V power supply)
Grounding:	Class D (Max. 100Ω)
Cable size should be equal to the power cable	

Anchor bolt	: 4M0129376A (27 pieces)
Spring washer	: SS2552000 (27 pieces)
Spherical washer	: YS9195020 (27 pieces)
Nut	: SS2042000 (27 pieces)

Brace	: 4M0112190A (27 pieces)
Bolt	: SS0182015 (27 pieces)
Nut	: SS2042000 (27 pieces)
Floor plate	: 4M0112192A (27 pieces)



Foundation and Installation :

To maintain machine precision and prevent vibration, pay special attention to the following.

1. The foundation should be rugged enough to maintain safety and horizontality for the machine weight according to the ground for installation place. (Nominal strength : Min. 23 MPa)
2. The foundation concrete should be reinforced with reinforcing bars arranged as appropriate so that it may sufficiently withstand the machine weight.
3. The foundation concrete should be cured for 4 weeks.
4. When installing the machine, set leveling blocks for leveling, centering and to prevent oscillation as shown in the drawing and secure and adjust them with foundation bolts. Periodically check that they stay in proper position and condition.
5. The ground soil bearing power should be Min. 0.1 MPa.
6. When nature of the soil and soil bearing capacity are unfavorable, determine the pile size and number of piles accordingly for installation.
7. Drill each anchor hole within ±10 mm of the reference anchor hole.
8. Avoid the anchor hole positions when embedding reinforcing bars.
9. For the bond anchoring procedure, refer to "2.4 Anchor Bolt Embedding Work Procedure" in the Foundation and Installation Instruction Manual.

NOTE: The following bond should be prepared by customer when processing anchor holes.
 Bond E200 (Konishi Co., Ltd.)
 Amount required: 2.0 kg (Standard specification)

Total machine weight: 32000 kg
 Max. workpiece weight: 4000 kg

MC.0176FD005A 基礎図 1:45 MT00509 060901 内田 (君) REF:0176FD003A