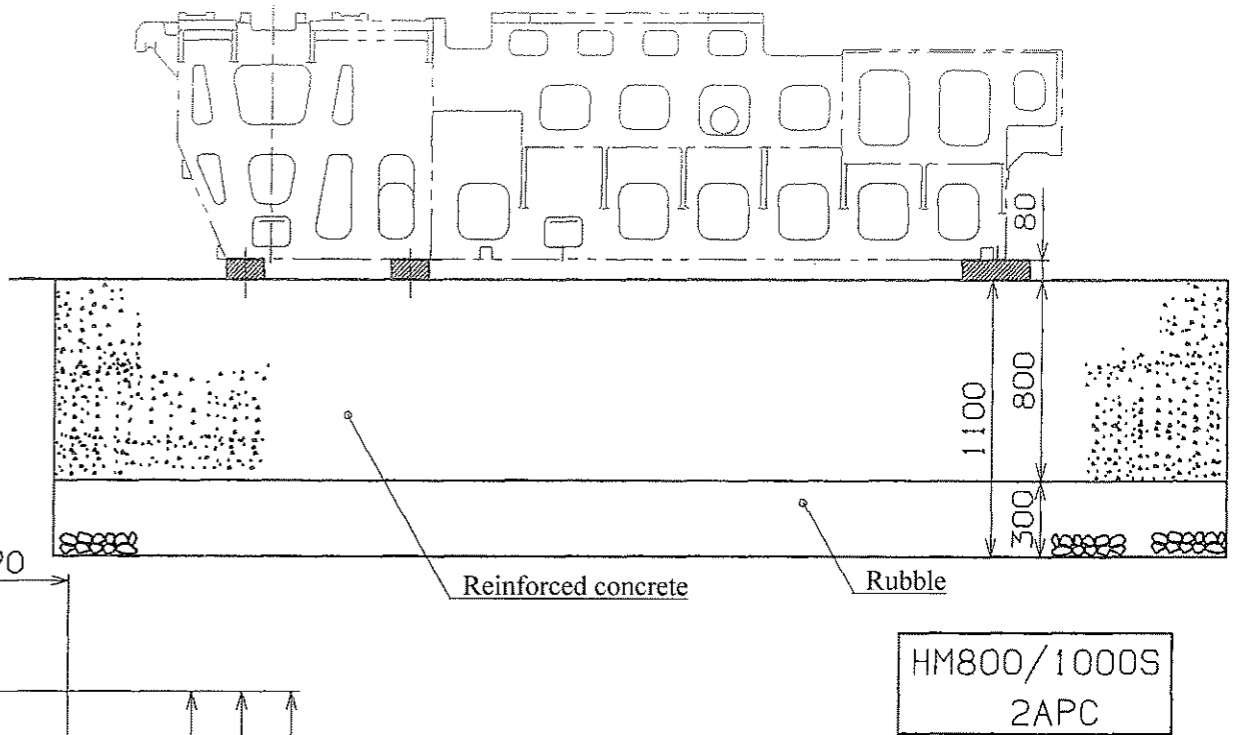
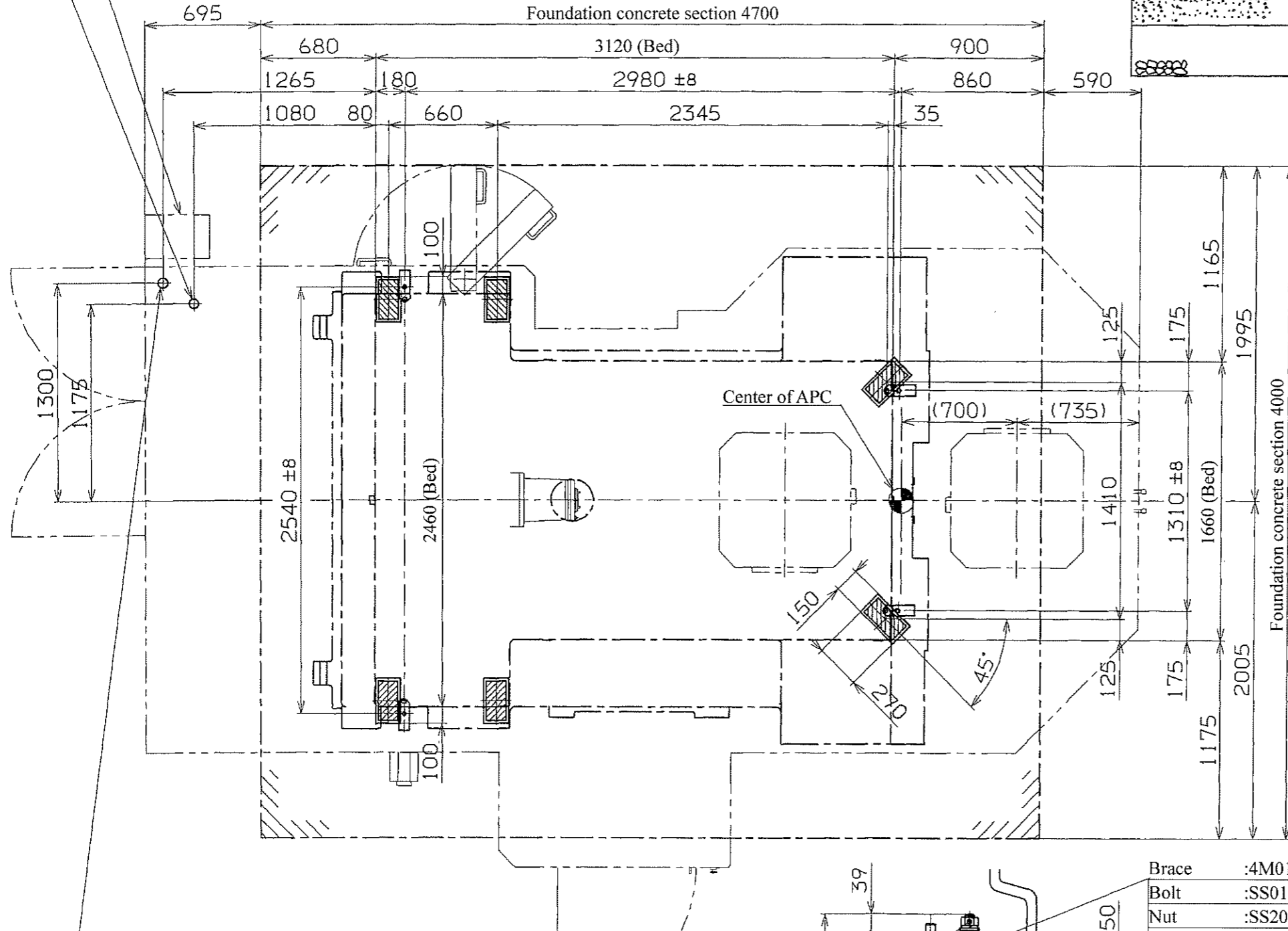


Foundation Drawing for Installation HM800/1000S (Bond Anchor Specification: Option)

Power cable connection (From floor to the control box base: 1350 mm)
 Power capacity for 8R/12R (option): 80 kVA (FANUC/MITSUBISHI)
 Cable size : Min. 80 mm²
 Grounding : Class D (Max. 100Ω) Cable size equal to the power cable

Drain tank (prepared by customer)
 for drain from the air filter



Foundation and Installation :

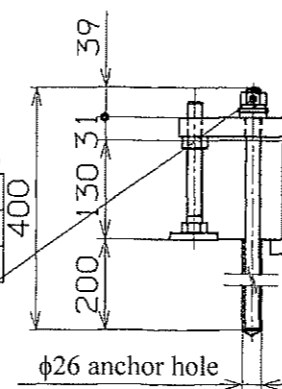
To maintain machine precision and prevent vibration, pay special attention to the following.

1. The foundation should be rugged enough to maintain safety and horizontality for the machine weight according to the ground for installation place. (Nominal strength : Min. 23 MPa)
2. The foundation concrete should be reinforced with the reinforcing bars arranged as appropriate so that it may sufficiently withstand the machine weight.
3. The foundation concrete should be cured for 4 weeks.
4. When installing the machine, set leveling blocks for leveling, centering and to prevent oscillation as shown in the drawing, and adjust and secure with foundation bolts (option). Periodically check that they stay in proper position and condition.
5. The ground soil bearing power should be Min. 0.07 MPa.
6. When the nature of the soil and soil bearing capacity are unfavorable, determine the pile size and number of piles accordingly for installation.
7. Drill each anchor hole in position within ±8 mm from the reference anchor hole.
8. Avoid the anchor hole position to embed the reinforcement.
9. For the bond anchor procedure, refer to the separate "Anchor Bolt Embedding Work Procedure".

NOTE: The following bond is used at the time of anchor hole processing.
 Bond E200 (Konishi Co., Ltd.)
 Required amount: 1.0 kg (Standard spec.)

Air supply connection (From floor to hose nipple: 1130 mm)
 Supply pressure: 0.4 to 0.6 MPa
 Capacity : 500 L/min (ANR) or larger
 Hose nipple: φ12 with Rc1/2
 Customer should prepare and connect a hose that is compatible with the above hose nipple.

Anchor bolt : 4M0138032A (4 pieces)
 Spring washer : SS2552000 (4 pieces)
 Spherical washer : YS9195020 (4 pieces)
 Nut : SS2042000 (4 pieces)



Brace : 4M0112190A (4 pieces)
 Bolt : SS0182018 (4 pieces)
 Nut : SS2042000 (4 pieces)
 Floor plate : 4M0112192A (4 sheets)

Floor plate (prepared by customer)
 150×270×t19

HM800/1000S

Total machine weight : 24500/25000 kg

Max. loadable weight of workpiece : 2000/2500 kg per pallet